

Hydraulic Tool Lubricator - HTL 101

Mounts Directly on Hydraulic Tool & Lubricates Continuously
During Operation



- Continuous lubrication with small amounts
- Ideal for all hydraulically driven units – the on-board hydraulic system drives the lubrication pump
- Compact unit – mounts directly on the hydraulic tool unit.
- Independent – The pump stays on the accessory even when the main carrier is exchanged.
- Exchangeable Grease Cartridges

Hydraulic Tool Lubricator

HTL 101 - Continuously the Best

The HTL 101 lubrication pump is especially designed to minimize friction and reduce wear on tools such as hydraulic hammers, grippers and other hydraulic driven devices that are subjected to heavy mechanical loads. The pump lubricates **continuously throughout the machine operation.**

Slick Operation

A simple visual check is enough to tell if the HTL 101 is functioning correctly. When the cam shaft rotates and the red follower plate in the cartridge sinks, the pump is running smoothly. An oil bypass system allows operation at temperatures as cold as -25°C.



Exchangeable Cartridges Eliminate Filling

Exchangeable 400 g cartridges make refilling procedures quick and easy. Cartridges are available with either a copper based chisel paste lubricant or with NLGI class 2 grease. The cartridges are equipped with a sturdy thread connection that can withstand even the toughest handling.

Installation & Maintenance Friendly

The HTL 101 lubrication pump is



driven by the machine's on-board hydraulic system. Extra drives, auxiliary power or control valves are all redundant.

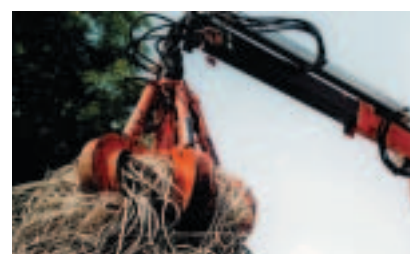


The HTL 101 mounts directly on the accessory, minimizing tubing and drastically reducing installation costs. An integrated over-pressure valve and a selection of three possible lubricant outlet locations makes it easy to find the optimum installation position.

A hydraulic throttle valve provides variable lubricant output adjustment that can be set for several applications.

System Benefits

- Continuous lubrication during the entire working phase of the hydraulic tool accessory



- No venting of hydraulic supply system necessary
- Compact design – mounts directly on the hydraulic tool
- Wide operating temperature spectrum
- Adjustable small quantities (starting at 0.2 cm³/min) equates to a significant reduction in lubricant consumption
- Exchangeable 400g cartridges with visual level control
- Oil inlet filter avoids contamination related faults
- Highly reliable operation
- Suitable for hydraulic tools that operate under water
- Economical lubrication solution

Applications

- Hydraulic hammers, grippers and pliers
- Hydraulic tool accessories
- Mini excavators and small machinery
- De-barking machinery